

Reta's Games Group

Date: Wednesdays, 10am to 12pm

Group Leader: Lucy Yin, Volunteer

Cost: No Charge

Description: Have fun while you practice communication and counting skills at the same time. We provide a warm & safe environment as we play Cards, Scrabble, Uno, and many other games to help stimulate your mind.

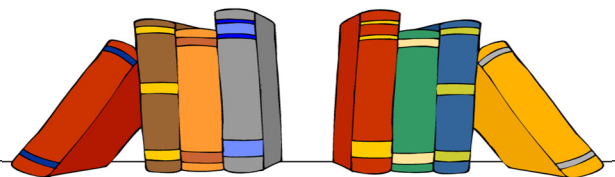
Our volunteer leader will help you get started or partner with you until you catch on to the game.



Coming Soon:

Talking Book Club – Spring 2019

- details coming in Spring 2019 Brochure.



Aphasia Center General Information

1) People living with aphasia are eligible to participate in our programs. A recent speech report will be requested to determine group placement.

2) Classes are filled on a first-come, first served basis. If classes are not full, late sign-up will be pro-rated.

3) Personal absences cannot be made up. If the Aphasia Center cancels a group, it will be made up at the end of the semester.

4) Weather cancellations—the Aphasia Center is open based on the Philadelphia School District. If the District closes, we will not hold sessions.

5) We offer light refreshments for select groups. If there are swallowing difficulties or dietary restrictions each member must be able to manage them independently or bring someone to assist.

6) Participants must be independent in a wheelchair or walking. This includes transferring, toileting and using any equipment (e.g., portable oxygen, etc.). If participant is not independent, someone must accompany to assist.

7) Cash, Checks and Money Orders are accepted forms of payment. Checks should be made payable to **MossRehab**. Payment arrangements can be made with Nikki Benson at 215.663.6344.



Aphasia Activity Center Programs

Winter 2018

Aphasia Activity Center Programs are held at:

MossRehab - Elkins Park

Medical Arts Building
50 Township Line Rd, 3rd Floor
Elkins Park, PA 19027

**Contact Nikki Benson
with questions:**

215.663.6344

or

BensonWN@einstein.edu

Constance Sheerr Kittner Conversation Café

Therapist Led Conversation Groups

Dates: Mondays, Dec 10th thru Mar 4th
Tuesdays, Dec 11th thru Mar 5th

Group Leader: Karen R. Cohen,
Speech Language Pathologist

Cost: \$125.00 (10 Sessions)

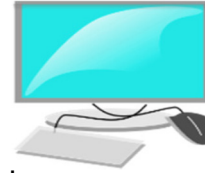
Description: Do you want to have some fun while tuning up your communication skills? Then join our Connie Kittner Conversation Café. Group members are given the opportunity to have their voices heard in a supportive environment while enjoying light refreshment. Sessions provide opportunities for adult conversation and social interaction, while encouraging the use of successful and effective communication techniques and strategies for coping with aphasia and enjoying life.



Placement for groups is determined by the group leader. If interested, please contact Nikki Benson to complete a registration packet. Call 215.663.6344 or email BensonWN@einstein.edu.

Computer Lab

Dates: Call 215-663-6344



Times: By appointment only

Cost: \$250.00 (Returning Members)
(10 sessions)

\$300.00 (New Members)
(10 sessions + assessment)

\$25.00 per session
(Available if schedule permits)

Description: Do you want to: Learn more about programs available on the computer and through the Internet? Email family and friends? Practice speech and language skills one-on-one?

Individuals who have completed speech therapy and have targeted goals for continued self-study may be eligible to participate in one-on-one computer practice with guidance and support by a trained volunteer under the supervision of a speech-language pathologist. Group classes may be offered during the year and will be advertised as they become available.

Eligibility: New participants in the Computer Lab will be asked to provide a recent speech therapy report or participate in a screening.

Individuals are assigned for sessions as openings become available.

People with Aphasia Training Dogs



The P.A.T.D Program

Dates: 6 training sessions + meetings

Location: Your house or the PSPCA!

Times: Schedule determined with you, sessions are scheduled at set intervals

Cost: Free!

Description: Choose 6 obedience skills like "sit", "down", "stay" to work on with your dog or with a shelter dog

Why: Strengthen your bond with your dog • Help a shelter dog • Practice communication skills • Learn new skills you can grow on your own a once you finish the program • The possibilities are up to you!

Contact: Sharon Antonucci, PhD CCC-SLP
Email: antonucs@einstein.edu
Phone: 215-663-6561